

Nga Maia ki Tamaki Makaurau

Nga Maia o Aotearoa Māori Midwives Auckland Region

Regional monthly hui venue and postal address: NZCOM Auckland Region
Midwifery Resource Centre, Yarnton House, 14 Erson Ave Royal Oak, Auckland

Phone: Megan Tahere (Chairperson) 027 3669358 or Kaniwa Kupenga (Deputy
Chairperson) 021 02891937

Email: ngamaia.tamakimakaurau@gmail.com

Ngā mihi nui ki a koutou katoa, warm greetings to you all

Thank you to everyone who joined us for our November hui. It was an enjoyable evening of progressive discussion and strategic planning to advance the development of our rūpu. The enthusiasm brought to our hui by midwifery students and whānau interested in joining the midwifery profession is reason for celebration and we thank you for your valuable contribution.

Our monthly hui are a key component of our rūpu activities. Therefore, we would like to remind you that our hui are held on the second Wednesday of every month, excluding January. These are held at the New Zealand College of Midwives Auckland Region Midwifery Resource Centre in Royal Oak, Auckland. The evening is split into two segments, firstly a Committee and business hui where all Nga Maia o Aotearoa members are welcome to attend. This is followed by an education hui where an engaging and informative guest speaker or discussion forum topic is presented. All midwives, student midwives and whānau across the motu are welcome to join us at this segment to share time, knowledge, thoughts and kai. Participation in our hui enables midwives to collect Midwifery Council of New Zealand professional activity and elective education points, depending on the segment attended. Nau mai haere mai, piki mai kake mai!

Unfortunately, our scheduled guest speakers for the evening, Matua Hone Ratana and Whaea Ngareta Thorpe were unable to locate our hui on the night. Therefore, we have rescheduled them to join us in December. So if you thought you had missed this exciting presentation we are happy to inform you that you have another opportunity to attend.

We would like to announce that Puti Baker was nominated and appointed to the Treasurer role on our Nga Maia ki Tamaki Makaurau Committee. We welcome Puti to this position and look forward to the skills she will bring to ensure the financial matters of our rūpu are well monitored and maintained.



Upcoming Events

November 23, 2016

Titahi Ki Tua (TKT) AUT Māori Student
Association (Every Wednesday)

November 24, 2016

NZ Breastfeeding Alliance AGM

December 2, 2016

Safe Sleep day

December 6, 2016

NZCOM Auckland meeting - Christmas
Celebration

December 14, 2016

Nga Maia ki Tamaki Makaurau Hui

Save the date - 2017

March 24, 2017

The Birthing Room Conference 2017 -
Cultivating Our Roots: Let the Tree
Flourish

May 25 - 27, 2017

NZNO Women's Health Section
Conference 2017

June 18 - 22, 2017

31st ICM Triennial Congress, Toronto

Check out our
Nga Maia o Aotearoa website
<http://www.ngamaia.co.nz>



Nga Maia ki Tamaki Makaurau

Read more about our rūpu
<http://nzcomauckland.org.nz/>

WHAT YOU MISSED AT OUR LAST MONTHLY HUI

Wednesday 09th November, 2016

- Nga Maia o Aotearoa invites all midwives, student midwives and whānau to become a member or renew their membership for the 2016 - 2017 period. For further details please visit our website <http://www.ngamaia.co.nz>
- We would like to thank Jean Tehuia (NMOA CEO) and Beverly Tehuia (NMOA Board Chairperson) for the card they sent our rōpu acknowledging our manaaki, aroha and contribution to the NZCOM 14th Biennial Conference.
- As a result of discussions with midwifery students we will be increasing our Māori Midwifery Student Representative roles on our Nga Maia ki Tamaki Makaurau Committee. If you are a current first or second year AUT University Māori midwifery student and are interested in one of these positions, we invite you to email your expression of interest and personal bio to ngamaia.tamakimakaurau@gmail.com before 9th December 2016 at 1800. Elections will take place at our December Committee hui.
- Applications are now open for our 2016 Nga Maia ki Tamaki Makaurau Māori Midwifery Student Financial Assistance grants. This funding will be granted to a mixture of first, second and third year AUT University Māori midwifery students in the Tamaki Makaurau region to pay for Nga Maia o Aotearoa annual membership fees. There will also be special grants awarded to pay both Nga Maia o Aotearoa and New Zealand College of Midwives annual membership fees. If you have already paid your membership fees we invite you to apply for a grant to reimburse your payment. To apply please complete the attached application form and email it and the required documents to ngamaia.tamakimakaurau@gmail.com before 9th December 2016 at 1800. Grants will be awarded at our December hui.
- We have commenced planning a Wahakura Wānanga to take place in February 2017. To precede this our December education hui will include tikanga around the harvesting of harakeke in preparation for the wānanga.

NAU MAI HAERE MAI KI TE HUI A NGA MAIA KI TAMAKI MAKAUURAU

Venue: NZCOM Auckland Region Midwifery Resource Centre,
Yarnton House, 14 Erson Ave, Royal Oak, Auckland

Time: Wednesday 14th December 2016, 1800 - 2130

1800 - 1930: Committee and regional business hui

Nga Maia o Aotearoa members welcome (MCNZ professional activity points approved)

1930 - 2130: Regional hui and education/guest speaker/discussion forum

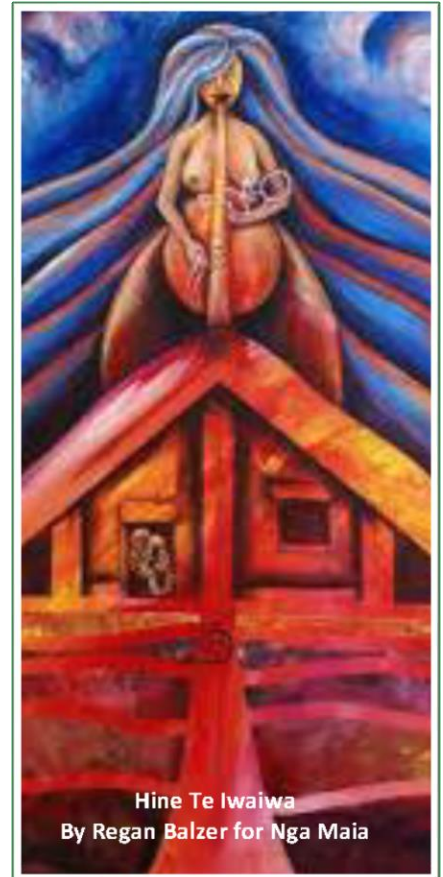
All midwives, students and whānau welcome (MCNZ elective education points approved)

November Guest Speaker and Education

Matua Hone Ratana and Whaea Ngareta Thorpe

Rongoa Māori for hapūtanga, māmā and pēpi, and tikanga Māori when harvesting harakeke

You are welcome to bring a plate of kai to share



Hine Te Iwaiwa
By Regan Balzer for Nga Maia

Announcements

Angela Treacy - Secretary

If you are due for your MSR and require certificates for your Nga Maia ki Tamaki Makaurau professional activity and elective education involvement, please email me at least two weeks prior to needing these records. Also, members can you please advise me if you have a change in contact details for rōpu communications.

ngamaia.tamakimakaurau@gmail.com

Puti Baker - Treasurer

If you would like to become a Nga Maia o Aotearoa member, please visit <http://www.ngamaia.co.nz> for further details and to download a membership form. Annual membership fees are: Midwife - \$100; Student Midwife, Whānau, Consumer, Kaumatua - \$30.00.

Ki te whakaohoho i te mauri o ngā tikanga o ia whānau o tenā o tenā