

# Nga Maia ki Tamaki Makaurau

## Nga Maia o Aotearoa Māori Midwives Auckland Region

**Regional monthly hui venue and postal address:** NZCOM Auckland Region  
Midwifery Resource Centre, Yarnton House, 14 Erson Ave Royal Oak, Auckland

**Phone:** Megan Tahere (Chairperson) 027 3669358 or Kaniwa Kupenga (Deputy  
Chairperson) 021 02891937

**Email:** [ngamaia.tamakimakaurau@gmail.com](mailto:ngamaia.tamakimakaurau@gmail.com)



### Upcoming Events

#### May 7, 2016

Nga Maia ki Tamaki Makaurau AUT  
University Māori Midwifery  
Student Hui

#### May 11, 2016

Nga Maia ki Tamaki Makaurau  
Monthly Hui

#### July 12 - 15, 2016

AUT University Midwifery  
Programme - First Year Midwifery  
Student Marae Week

#### August 26, 2016

Nga Maia o Aotearoa AGM

#### August 26 - 28, 2016

NZCOM 14<sup>th</sup> Biennial Conference

#### Looking forward to 2017

#### June 18 - 22, 2017

31<sup>st</sup> ICM Triennial Congress,  
Toronto

### *Ngā mihi nui ki a koutou katoa, warm greetings to you all*

Another enjoyable evening of business, education and kai had by all in attendance this month. Thank you to our guest speakers Dr Adrian Trenholme (Kidz First Paediatrician) and Adrienne Priday (Project Midwife) who joined us to present their Clinical Trial Study on RSV Immunisation in Pregnancy and an update on SUDI statistics in Counties Manukau.

Alarming statistics for our Māori children (particularly from babies up to 2 years old) living in Counties Manukau who are admitted to hospital each year from bronchiolitis, pneumonia and upper respiratory tract infections highlights the need for action. The Clinical Trial Study on RSV Immunisation is currently recruiting women between the ages of 18-40 who are 31-36 weeks gestation in the Counties Manukau area. Worldwide the study needs 8000 women to participate in this randomised controlled trial. For further information about the Trial please contact Adrienne Priday on 021 508 015 or the Middlemore Clinical Trials team on 0800 RSV BABY (0800 778 2229). Dr Trenholme also presented SUDI statistics which show that there has been a marked reduction in SUDI cases in the Counties Manukau area, especially among Māori babies. Dr Trenholme highlighted the commitment and work of midwives as influencing this reduction, and commended midwives on their prevention work with women and their whānau.

We would like to thank the New Zealand College of Midwives Auckland Region for accepting our funding application and generously granting our rōpu funds which will support the continuation of our monthly hui and activities. Your ongoing support and partnership is hugely valued. Nga mihi nui ki a koutou katoa. Please remember that all midwives, student midwives and whānau are warmly invited to attend the education and discussion forum segment of our monthly hui.

Check out our  
Nga Maia o Aotearoa website  
<http://www.ngamaia.co.nz>



Nga Maia ki Tamaki Makaurau

## WHAT YOU MISSED AT OUR LAST MONTHLY HUI

Wednesday 13<sup>th</sup> April, 2016

- Planning of a hui for our AUT University Māori midwifery students continued with May the 7<sup>th</sup> 2016 confirmed as the date. Please see the attached panui and programme for further details on this exciting event.
- Cultural competency remains high on our agenda, with an opportunity to contribute to the cultural competency segment of the AUT University first year midwifery student marae week arising. Further discussion is required and an additional meeting date was proposed to enable this.
- The NZCOM Auckland Region have offered to add a tab on their website for our rūpu so information about Nga Maia ki Tamaki Makaurau can be accessed more widely. We will be forwarding details to them soon, so keep an eye out for us and our activities at <http://nzcomauckland.org.nz/>
- Thank you to the Australian and New Zealand Stillbirth Alliance for giving us the opportunity to provide feedback on their 'Your baby's movements and what they mean' brochure and their proposed mobile phone app for women to monitor their baby's movements. Our rūpu has provided some feedback on the brochure and advised that we feel the app is irrelevant to our New Zealand women as we have a different model of care here and we would not encourage women to consult their phone app if they have concerns regarding their baby's movements.

### NAU MAI HAERE MAI KI TE HUI A NGMA MAIA KI

#### TAMAKI MAKURAU

#### Kaupapa for our next hui

**WHERE:** NZCOM Auckland Region Midwifery Resource Centre,  
Yarnton House, 14 Erson Ave, Royal Oak, Auckland

**WHEN:** Wednesday 11<sup>th</sup> May 2016, 1800 - 2130

#### 1800 - 1930

Committee and regional business hui

**Nga Maia o Aotearoa members welcome**

(MCNZ professional activity points approved)

If you have any agenda items for next month's hui or apologies to be noted in our attendance book please email Dianne Hemopo (Secretary)

#### 1930 - 2130

Regional hui and discussion forum

**All midwives, student midwives and whānau welcome**

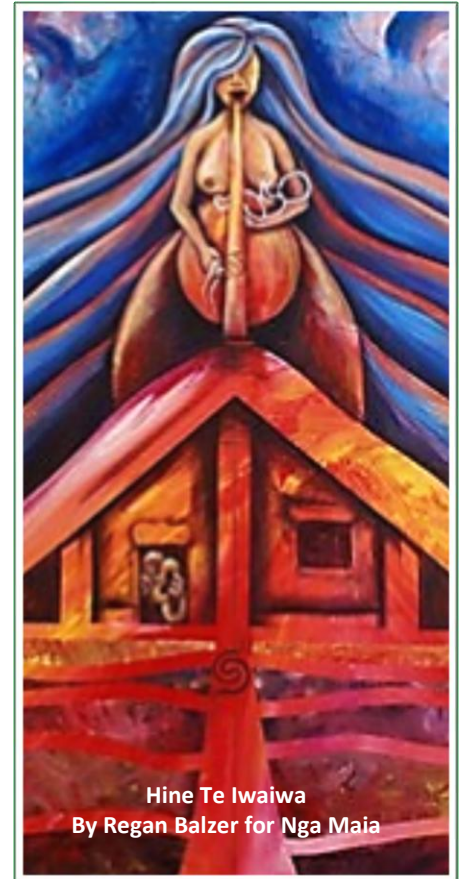
(MCNZ elective education points approved)

#### Discussion Forum

*'The 2017 - 2020 MCNZ consultation document for recertification - Have your say, what do you want to see in our recertification programme?'*

You can review the document at <https://www.midwiferycouncil.health.nz>

You are welcome to bring a plate of kai to share



## Announcements

### Dianne Hemopo (Secretary)

If you are due for your MSR and require certificates and a record of your Nga Maia ki Tamaki Makaurau professional activity and elective education involvement please email me at least two weeks prior to needing these records. Also, members can you please advise me if you have a change in email address and phone number for rūpu communications.

[ngamaia.tamakimakaurau@gmail.com](mailto:ngamaia.tamakimakaurau@gmail.com)

### Kiley Hewitt (Treasurer)

If you would like to become a Nga Maia o Aotearoa member please visit our website for further details and to download a membership form.

<http://www.ngamaia.co.nz>

Annual membership fees are: Midwife - \$100; Student Midwife, Whānau, Consumers, Kaumatua - \$30.00.

Ki te whakaohoho i te mauri o ngā tikanga o ia whānau o tenā o tenā